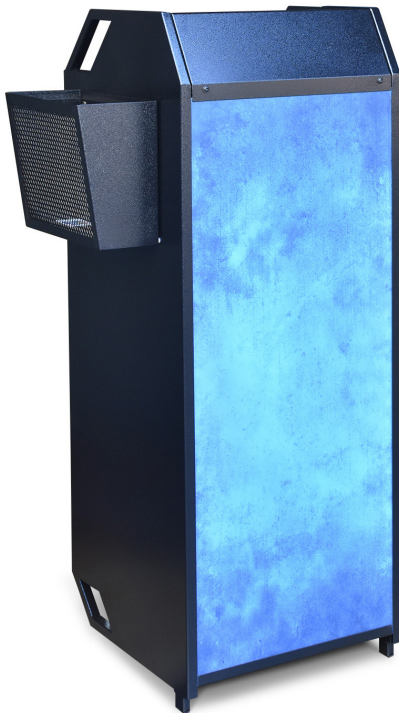


# Compact Hostess Stand

Ultra Portable. Popular Features. Great Price.

SCAN  
THE CODE  
TO VISIT THE  
PRODUCT ONLINE



Compact Hostess Stand in  
Blue Stone Textured Vinyl Print

## Unique Features

- 16 gauge, heavy-duty metal frame in black or white powder coated steel
- Interchangeable front panel available in hundreds of laminate options, translucent white acrylic, and solid gloss colored acrylic
- Optional power supply station
- Optional menu holder
- Optional LED System

## Dimensions

24" W x 21" D x 48" H (including menu holder)  
18" W x 21" D x 48" H (excluding menu holder)  
16" W x 19" D (work surface area)

## Weight

98 lbs.

## Standard Features

- Locking drawer w/ stainless steel handle
- 2 removable shelves
- 2 Heavy-duty casters
- Replaceable parts
- Pre-assembled
- Manufacturer's Warranty



EXPIRES 3/11/25

**STARTING PRICE**    ~~\$750.00~~    **\$675.00**

### Panels

No Panel	\$0	<b>\$0</b>
Acrylic Panels	\$0	<b>\$0</b>
Textured Vinyl Print	\$455	<b>\$409.50</b>
Laminate Panels	\$655	<b>\$589.50</b>

### Artwork Options

Large Magnet *	\$445	<b>\$400.50</b>
Vinyl Print	<del>\$435.00</del>	<b>\$391.50</b>
LED Kit *	\$411	<b>\$369.90</b>
Cabinet Doors	\$125	<b>\$391.50</b>
Menu Holder	\$60	<b>\$54</b>
Tiered Menu Holder	\$115	<b>\$103.50</b>
Cover	\$80	<b>\$72.00</b>

\* for Acrylic Panels only



3111 Camino Del Rio North, Suite 400  
San Diego, CA 92108  
thehostessstation.com  
sales@thehostessstation.com

Compact Hostess Stand  
in white acrylic panel  
with LED

TALK TO US ABOUT PRICING,  
AVAILABILITY AND DELIVERY TIMES.

**877-946-7975**

# Deluxe Hostess Stand

Durable Powder Coated Steel Frame, Customizable Panels, Locking Casters

SCAN  
THE CODE  
TO VISIT THE  
PRODUCT ONLINE



White Deluxe Hostess Stand in Tawney  
Marquetry Laminate with Tiered Menu Holder  
We have hundreds of laminates to choose from

## Unique Features

- 16 gauge, heavy-duty metal frame in black or white powder coated steel
- Interchangeable panels available in 800+ laminate options as well as custom artwork, black, and color acrylic options
- Optional Gold, bronze, and stainless steel trim
- Optional Curved Counter
- Optional Custom LED signage
- Optional LED Lighting
- Optional Single or Tiered menu holder
- Optional Cabinet Door

## Standard Features

- Translucent white panels
- Electronic device compatible
- Steel working surface
- Drawer w/ stainless steel handle
- 2 removable shelves
- 4 Heavy-duty locking plated casters
- 1 slam locks with keys
- Replaceable parts
- Delivers fully assembled
- Manufacturer's Warranty

## Dimensions

39.5" W x 24" D x 49" H (including menu holder)  
36.5" W x 24" D x 49" H (excluding menu holder)  
28" W x 18" D (work surface area)

## Weight

150 lbs



Black Frame Deluxe Hostess Stand in Scorched  
Chestnut laminate, Gold Counter Trim, Vinyl  
Decal Print and with Tiered Menu Holder

STARTING PRICE ~~\$2,125.00~~ **\$1,912.50**

### Panels

Acrylic Panels	\$0	<b>\$0</b>
Textured Vinyl Print	\$300	<b>\$270.00</b>
Laminate Panels	\$825	<b>\$742.50</b>
Curved Counter	\$50	<b>\$45.00</b>
Counter Trim *		
Stainless Steel	\$49	<b>\$44.10</b>
Bronze / Gold	<del>\$55.00</del>	<b>\$49.50</b>

### Vinyl Print

Front Only	\$285	<b>\$256.50</b>
Front & Sides	\$415	<b>\$373.50</b>

LED Sign **	\$1300	<b>\$1170.00</b>
LED Kit	\$435	<b>\$391.50</b>
LED Kit (No Battery)	\$160	<b>\$144.00</b>
Cabinet Door	\$150	<b>\$135.00</b>
Menu Holder	\$60	<b>\$54.00</b>
Tiered Menu Holder	\$115	<b>\$103.50</b>
Cover	\$80	<b>\$72.00</b>

\* Available on Straight Counters only  
\*\* for Laminate and TVP Panels only



3111 Camino Del Rio North, Suite 400  
San Diego, CA 92108  
thehostessstation.com  
sales@thehostessstation.com

TALK TO US ABOUT PRICING,  
AVAILABILITY AND DELIVERY TIMES.

**877-946-7975**

# Team Hostess Stand

Double-wide, Customizable Panels, Electronics Ready

SCAN  
THE CODE  
TO VISIT THE  
PRODUCT ONLINE



Black Frame Team Stand with Printed LED Signage,  
Curved Counter, and in Tawney Marquetry laminate.  
*We have hundreds of laminates to choose from*

## Unique Features

- 16 gauge, heavy-duty metal frame in black or white powder coated steel
- Interchangeable panels available in 800+ laminate options as well as custom artwork, black, and color acrylic options
- Optional Curved Counter
- Optional Gold or bronze trim (straight counters only)
- Optional Custom LED signage
- Optional LED lighting
- Optional Cabinet Door
- Optional Single or tiered menu holder

## Standard Features

- Translucent white panels
- Electronic device compatible
- Steel working surface
- Drawer w/ stainless steel handle
- 2 removable shelves
- 4 Heavy-Duty locking plated casters
- 2 slam locks with keys
- Replaceable parts
- Arrives fully assembled
- Manufacturer's Warranty
- Replaceable parts
- Pre-assembled
- Manufacturer's Warranty

## Dimensions

56" W x 28" D x 49" H (including menu holder)

53" W x 28" D x 49" H (excluding menu holder)

44.5" W x 23.5" D (work surface area)

## Weight

350 lbs.



EXPIRES 3/11/25

**STARTING PRICE**     ~~\$3500~~     **\$3150**

### Panels

Acrylic Panels	\$0	<b>\$0</b>
Textured Vinyl Print	\$475	<b>\$427.50</b>
Laminate Panels	\$600	<b>\$540</b>

### Counter Trim \*

Stainless Steel	\$75	<b>\$67.50</b>
Bronze / Gold	\$75	<b>\$67.50</b>

Customer Counter     \$75     **\$67.50**

LED Sign \*\*     \$1350     **\$1215**

LED Kit     \$435     **\$391.50**

Cabinet Door     \$300     **\$270**

Menu Holder     \$60     **\$54**

Tiered Menu Holder     \$115     **103.50**

Cover     \$95     **\$85.50**

\* Available on Straight Counters only

\*\* for Laminate and TVP Panels only



with Cabinet Doors



3111 Camino Del Rio North, Suite 400  
San Diego, CA 92108  
thehostessstation.com  
sales@thehostessstation.com

TALK TO US ABOUT PRICING,  
AVAILABILITY AND DELIVERY TIMES.

**877-946-7975**

# LED Signage



**Etched Acrylic**

*Best for more complex logos with fine linework – can be mixed with laser-cut portions to*



**Laser-Cut**

*Best for simple designs with thicker linework in one or two colors.*

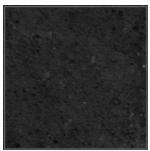


**Printed Acrylic**

*Best for multicolored logos and use with or without LEDs.*

LED signs are available in textured vinyl print & laminate panels of Deluxe & Team stands

## Textured Vinyl Print



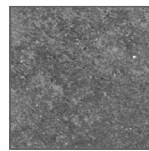
Black Grunge



Blue Stone



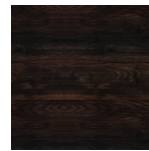
Calcutta Marble



Grey Concrete



Reclaimed Wood



Burnt Oak



Aged Wood



Stained Walnut



Planked Chestnut Wood

## 800+ Laminate Finish Options



Antique Tobacco Pine



Salem Planked Chestnut



Jubilee Oak



Skyline Walnut



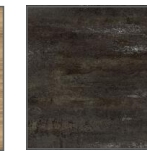
White Driftwood



Rediscovered Oak Planked



Fawn Cypress



Forged Steel



Hale St Concrete



Calcutta Marble



Glacier Quartzite



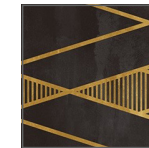
Rustic Slate



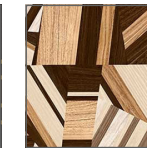
Piedra Flor



Lush Jungle



Deco Charcoal



Newport Marquetry



Scan the code to visit Wilsons art's hundreds of Laminate options online